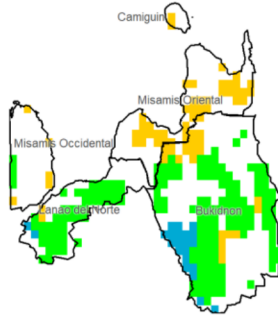


Region X (Northern Mindanao)

Water Availability for Rice
Prevailing Stage : None

Harvesting and/or pre-planting stage is possibly ongoing.

Water Availability for Corn
Prevailing Stage : (IV) Maturity



Provincial Values

Province	Mon. Ave. Rainfall (mm)	Rice CCI (%)		Corn CCI (%)	
		CS	CCI (%)	CS	CCI (%)
Bukidnon	155.4	I	66.0	I	143.6
		II	60.4	II	100.0
		III	57.9	III	77.8
		IV	93.8	IV	98.8
Camiguin	62.4	I	19.8	I	25.1
		II	18.2	II	16.5
		III	17.4	III	11.0
		IV	28.7	IV	16.1
Lanao del Norte	150.8	I	85.5	I	162.5
		II	79.2	II	114.1
		III	76.5	III	88.9
		IV	116.5	IV	112.8
Misamis Occidental	77.3	I	18.3	I	53.4
		II	16.3	II	39.2
		III	15.5	III	30.1
		IV	27.6	IV	38.8
Misamis Oriental	108.2	I	22.0	I	48.6
		II	20.1	II	32.2
		III	19.2	III	24.6
		IV	32.2	IV	31.8

Crop Stage (CS) highlighted in black is the dominant stage during the month of May

Rice CS: (I) Nursery, (II) Establishment, (III) Reproductive, (IV) Ripening
Corn CS: (I) Establishment, (II) Vegetative, (III) Reproductive, (IV) Maturity
CCI Category: Inadequate (Yellow), Sufficient (Green), Excess (Blue)

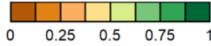
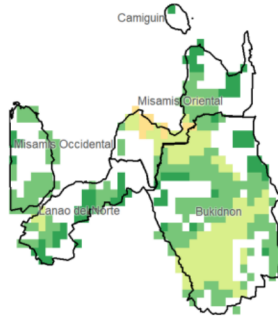
Regional Summary

The provinces of Northern Mindanao are currently experiencing the maturity phase of their corn crops. In Misamis Occidental, Misamis Oriental, and Camiguin, providing less water during the reproductive to maturity stages may not be beneficial for the crops, and might result in lower yields. Bukidnon and Lanao del Norte, on the other hand, had adequate rainfall to support the crops.

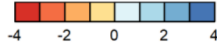
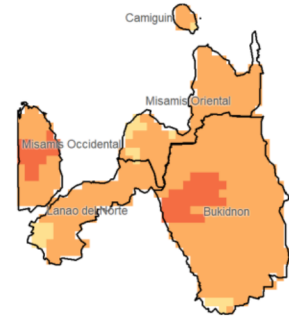
The SPEI3 map shows that during the previous three months, there has been some dry weather in some portions of Misamis Occidental and western Bukidnon. This might cause crop yields to drop throughout the province.

Furthermore, there has not been any appreciable heavy rainfall in the region, according to the RX1day and RX5day maps which indicated 50mm and 150mm of rainfall, respectively.

NDVI



SPEI3 (Mar-Apr-May)



RX1day



RX5day

